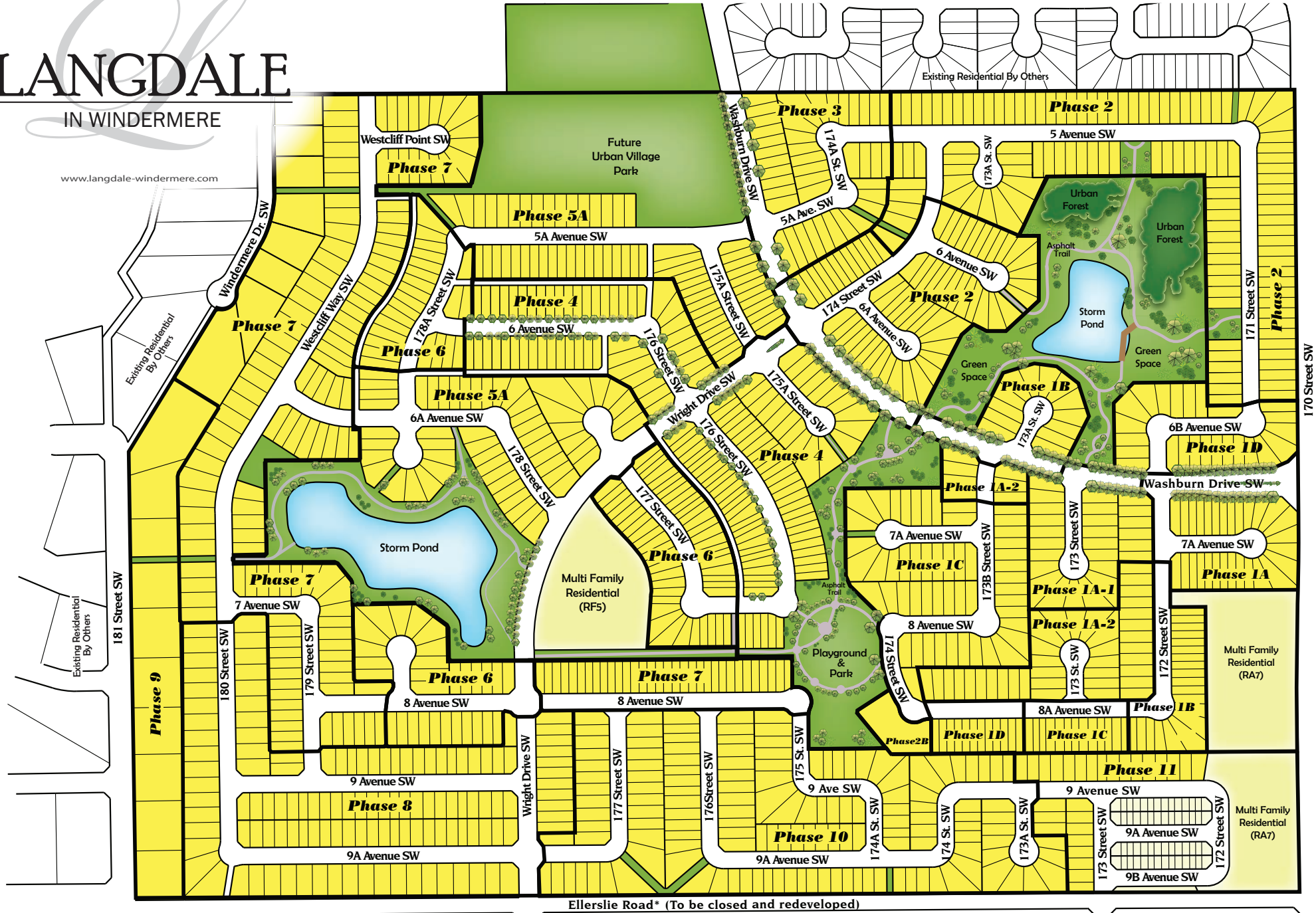


LANGDALE

IN WINDERMERE

www.langdale-windermere.com



Ellerslie Road* (To be closed and redeveloped)



Information provided is based on approved NSP at the time of printing and is subject to change. "Future Residential" includes single family, duplex style lots and town homes. For current planning information contact the City of Edmonton, Sustainable Development Branch.

Preliminary Plan

May 3, 2016

*Portions of Ellerslie Road to be closed and redeveloped. Timing to be determined by future road alignment.

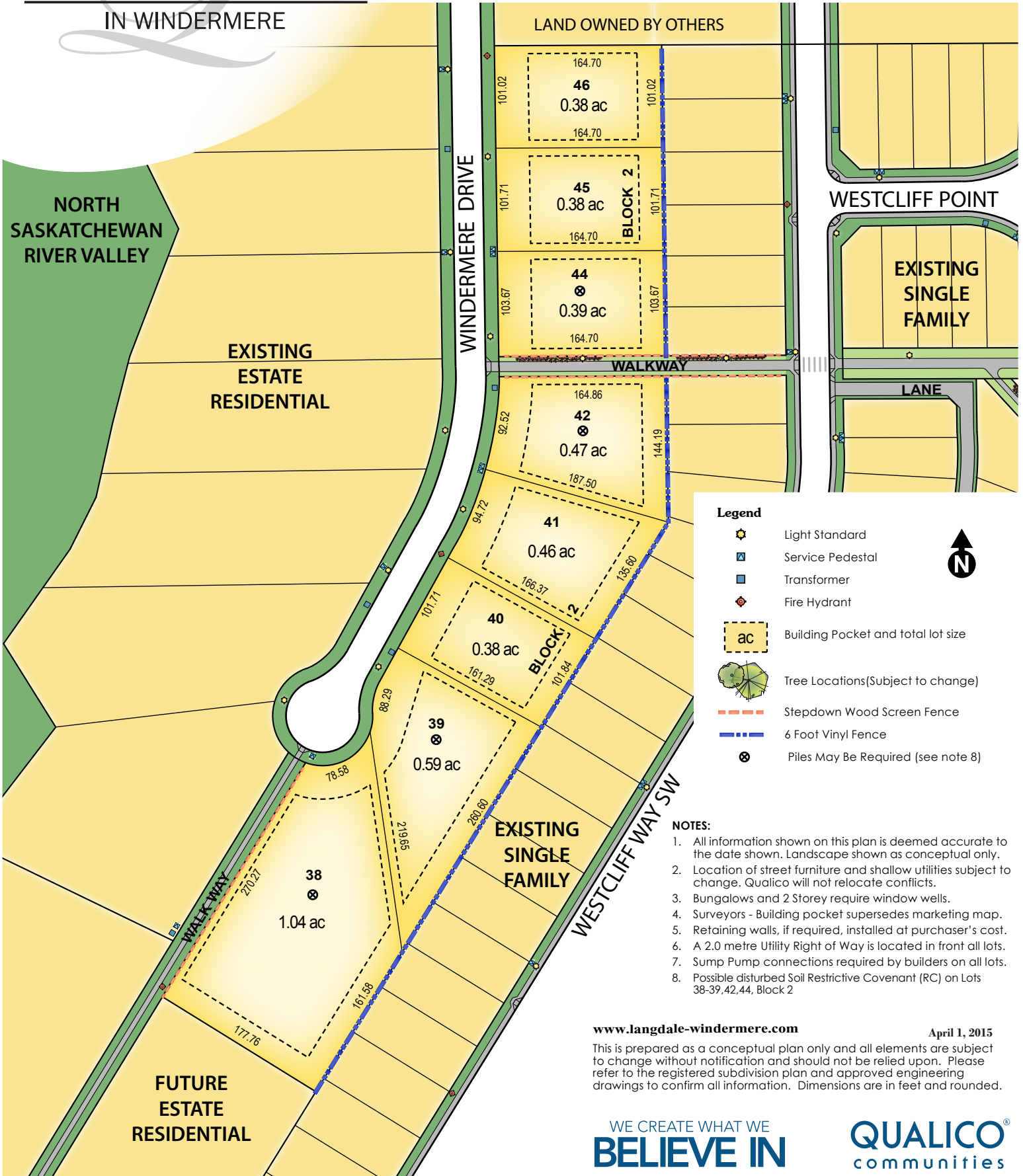
WE CREATE WHAT WE
BELIEVE IN

QUALICO
communities

Phase 7 (Estate) Lot Information Plan

LANGDALE

IN WINDERMERE



www.langdale-windermere.com

April 1, 2015

This is prepared as a conceptual plan only and all elements are subject to change without notification and should not be relied upon. Please refer to the registered subdivision plan and approved engineering drawings to confirm all information. Dimensions are in feet and rounded.

WE CREATE WHAT WE
BELIEVE IN

QUALICO
communities